

# LITTLE MARY

DRUMS

KELLY ROSSUM

♩ = 144

**A**

DRUMS OUT

16

29

TENOR CUE

BRUSHES, MOSTLY COLORS

Musical staff with drum notation. It starts with a 3/4 time signature and a key signature of one flat. The notation includes a series of slashes representing drum sounds, with specific cues and dynamics. A bracket labeled 'IN ONE' spans the first four measures.

IN ONE

BRASS CUES

Musical staff with brass cues. It features a series of eighth notes with stems pointing up, indicating cues for the brass section. The notation is written in a 3/4 time signature.

**B** **C**

Musical staff with light jazz waltz. It features a series of dotted half notes, indicating a waltz rhythm. The notation is written in a 3/4 time signature.

LIGHT JAZZ WALTZ

Musical staff with light jazz waltz. It features a series of dotted half notes, indicating a waltz rhythm. The notation is written in a 3/4 time signature.

TO CODA

Musical staff with light jazz waltz. It features a series of dotted half notes, indicating a waltz rhythm. The notation is written in a 3/4 time signature.

**C** STICKS

TO STICKS

Musical staff with light jazz waltz. It features a series of dotted half notes, indicating a waltz rhythm. The notation is written in a 3/4 time signature.

$\text{m}\frac{3}{4}$  IN THREE

SWING

Musical staff with swing. It features a series of eighth notes and quarter notes, indicating a swing rhythm. The notation is written in a 4/4 time signature.

$\frac{4}{4}$  IN FOUR

TO BRUSHES

Musical staff with light jazz waltz. It features a series of dotted half notes, indicating a waltz rhythm. The notation is written in a 3/4 time signature.

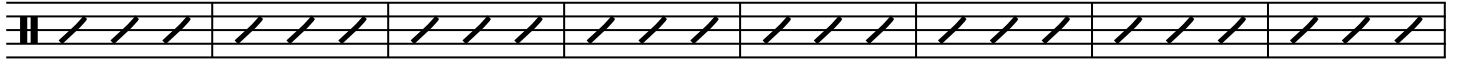
*p* FLOAT, COLORS

2

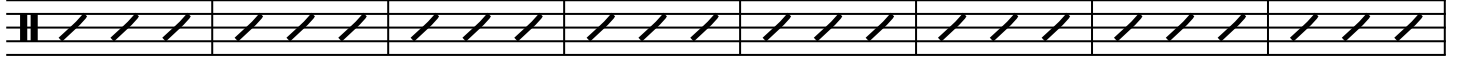
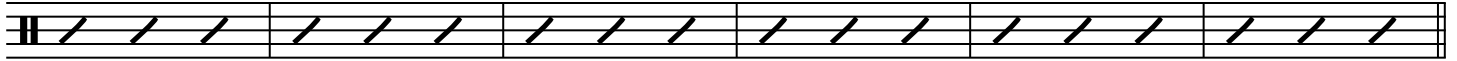
# LITTLE MARY



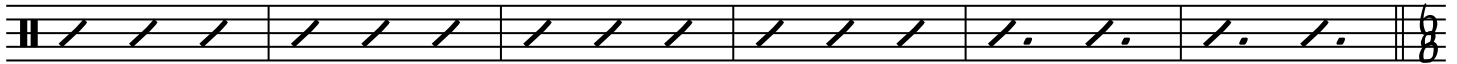
BRUSHES



BASS SOLO

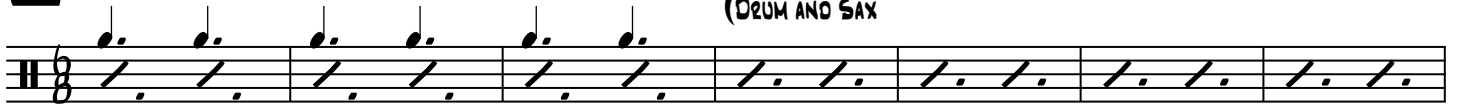


TO STICKS



HOEN CUES

DRUM AND SAX

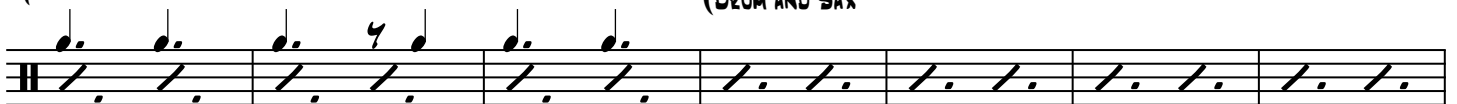


6/8 ROCK FEEL

INTENSE

HOEN CUES

DRUM AND SAX



LITTLE MARY

(HORN CUES)

Musical staff with notes and rests for Horn Cues. The staff contains a sequence of notes: quarter notes, eighth notes, and a half note with a slur. There are also rests throughout the staff.

**G** (DRUM AND SAX)

Musical staff for Drum and Sax. It features a series of diagonal slashes representing a drum pattern. Above the staff, there are two instances of '(HORN CUES)' with notes and rests.

**H** *ff* SAX SOLO

Musical staff for Sax Solo. It contains a series of 'x' marks representing notes. The text 'CONTINUE FEEL' is written above the staff.

STRAIGHT 8'S (PAT METHENY FEEL)

Musical staff with diagonal slashes representing a drum pattern.

TWO MEASURE PHRASE

Musical staff with diagonal slashes representing a drum pattern.

TWO MEASURE PHRASE      FOUR MEASURE PHRASE

(TRUMPET CUES)

Musical staff with notes and rests for Trumpet Cues. It includes a sequence of notes and rests, with a slur over the final notes.

**I**

Musical staff with diagonal slashes representing a drum pattern.

Musical staff with time signature changes. It shows a sequence of diagonal slashes with time signatures of 3/4, 8/8, and 3/4.

LITTLE MARY

FLOAT, COLORS

Musical staff with rhythmic slashes and a 3/4 time signature.



SWING

Musical staff with rhythmic slashes.

IN THREE



Musical staff with notes and a 4/4 time signature.

FLOAT, COLORS

IN FOUR

*p*

Musical staff with rhythmic slashes.

(D.S. AL CODA)

Musical staff with notes and square cue symbols K, L.

IN THREE

Musical staff with notes and square cue symbols M, N.

(1ST X ONLY)

Musical staff with rhythmic slashes and square cue symbols O, P.

6/8 ROCK FEEL

CRESCENDO TO END

Musical staff with notes and square cue symbol Q.

(TRUMPET CUES)

OPEN DRUM SOLO



*ff*