

TENOR SAX 1 (SOLO)

# LITTLE MARY

KELLY ROSSUM

♩ = 144

9 (SOLO)

**A** E<sup>M</sup>A<sup>7</sup> B<sup>SUS4</sup>/E

E<sup>M</sup>A<sup>7</sup> B<sup>M9</sup>/E

A<sup>M</sup>A<sup>7</sup>(#11) D<sup>M</sup>A<sup>7</sup> A<sup>M</sup>A<sup>7</sup>(#11) D<sup>M</sup>A<sup>7</sup> E<sup>7</sup> A<sup>M</sup>A<sup>7</sup> D<sup>7</sup>

C#<sup>7</sup> AS WRITTEN

4

**B** UNISON ON D.S.

TO CODA

**C**

LITTLE MARY

(SOLO DMA37

C#M17

87

**D**

**E**

**F**

87(#9)

(DRUM AND SAX

87(#9)

(DRUM AND SAX

**G**

87(#9)

(DRUM AND SAX

**H**

(SOLO EMA37

B SUS4/E

LITTLE MARY  
Bm19/E

Ema7



Ama7(#11) Dma7 Ama7(#11) Dma7 E7 Ama7



D7 C#7 F#m17 B7



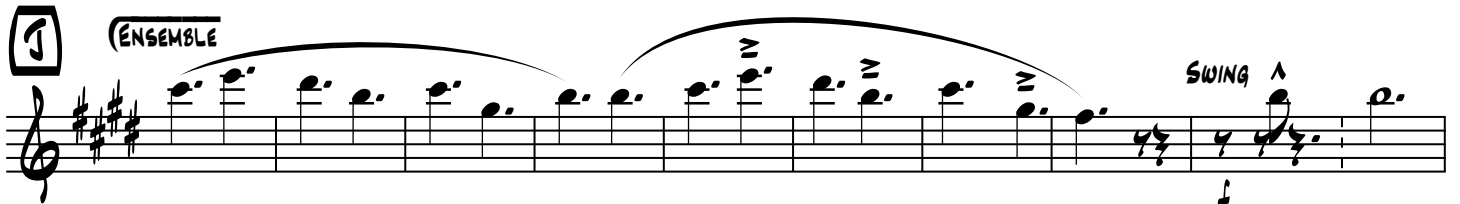
1 Ema7 C#m17 F#m17 B7 Ema7 C#m17 Dma7 B7



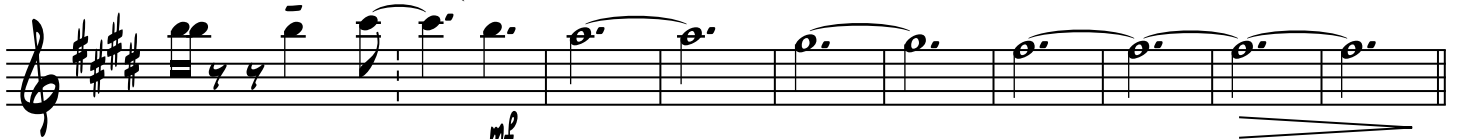
Ama7(#11) Dma7 Ama7(#11) Dma7



C#7 F#m17 B7 (END SOLO)



(SOLO) Dma7 C#m17 B7



(D.S. AL CODA)

4 **K** **O** **E**<sub>MA7</sub> **B**<sub>M17</sub> **E**<sub>MA7</sub> **B**<sub>M17</sub> **L** **E**<sub>MA7</sub> **B**<sub>M17</sub> **E**<sub>MA7</sub> **B**<sub>M17</sub>

**(SOLO)**

**M** **E**<sub>MA7</sub> **B**<sub>M17</sub> **E**<sub>MA7</sub> **B**<sub>M17</sub> **N** **E**<sub>MA7</sub> **B**<sub>M17</sub> **E**<sub>MA7</sub> **B**<sub>M17</sub>

**O** **E**<sub>MA7</sub> **B**<sub>M17</sub> **E**<sub>MA7</sub> **B**<sub>M17</sub> **P** **E**<sub>MA7</sub> **B**<sub>M17</sub> **E**<sub>MA7</sub> **B**<sub>M17</sub>

*Crescendo to end*

**Q** **E**<sub>MA7</sub> **B**<sub>M17</sub> **E**<sub>MA7</sub> **B**<sub>M17</sub> **E**<sub>MA7</sub> **B**<sub>M17</sub> **E**<sub>MA7</sub> **B**<sub>M17</sub>

**OPEN DRUM SOLO**