

LITTLE MARY

'C' LEAD SHEET

KELLY ROSSUM

(JAZZ WALTZ)

DMA7

AM17

DMA7

AM17



A

DMA7

Bm17

Em17

A7

DMA7

Bm17

CMA7

A7



GMA7(#11)

CMA7

GMA7(#11)

CMA7

D7

GMA7

C7

B7



Em17

A7

DMA7

AM17

DMA7

AM17

(2ND X ONLY)



B

GMA7

F#m17

Em17

A7

GMA7

F#m17

Em17

A7



GMA7

F#m17

Em17

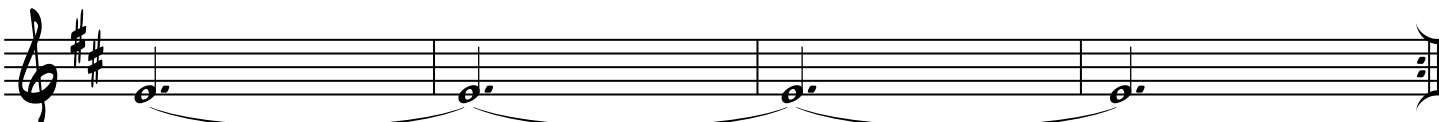
A7

CMA7

Bm17



A7



VAMP AND FADE ON A7 FOR ENDING.

FORM (64M) = A (22M) A (22M) B (20M)